

# Kidde ECS Advanced Delivery Fire Suppression System

## Component Description

Combined Cylinder Strap for 225 lb. and 395 lb. Systems P/N: 90-23612X-001



Effective: June 2014

K-90-108

### FEATURES

- Available in Two Sizes for 225-lb. and 395-lb. Systems
- Convenience of One Strap for Two Cylinders
- Easily Installed
- Custom fit for the Kidde ECS ADS System
- SAE 1020 Steel
- UL Listed
- FM Approved
- RoHS Compliant

### DESCRIPTION

The Kidde ECS ADS Fire Suppression System with FM-200<sup>®</sup> Agent Combined Cylinder Strap offers the convenience of one strap installation for a two-cylinder system. Custom made for use with the Kidde ECS ADS Systems, the strap is available in two sizes: one is custom fit for a 225 lb. tank and nitrogen driver cylinder, and one for the 395 lb. tank and nitrogen driver cylinder. Made of SAE 1020 steel, the strap is durable enough to withstand typical installation environments and is designed for easy, secure installation.

### INSTALLATION

The agent cylinder and nitrogen driver cylinders are secured in place using the combined cylinder strap. The strap is bolted to a solid wall or a strut assembly in three locations: left, right and center. Use 1/2-inch threaded rod and/or 1/2-inch diameter nuts, bolts and washers to secure the mounting strap to a vertical surface. After the containers are securely mounted, they can then be connected to the discharge piping per the system drawings.

### SPECIFICATIONS

#### MATERIALS

**Body:** SAE 1020 Steel

**Finish:** Black

#### Approx. Weight:

**225 lb. Strap:** 4.4 lb. (2.0 kg)

**395 lb. Strap:** 5.6 lb. (2.5 kg)



### ORDERING INFORMATION

Part Number	Description
06-236126-001	Cylinder Strap for use with the 395 lb. Cylinder and 4070 cu. in. Nitrogen Driver Set
06-236127-001	Cylinder Strap for use with the 225 lb. Cylinder and 2300 cu. in. Nitrogen Driver Set

**DIMENSIONS**

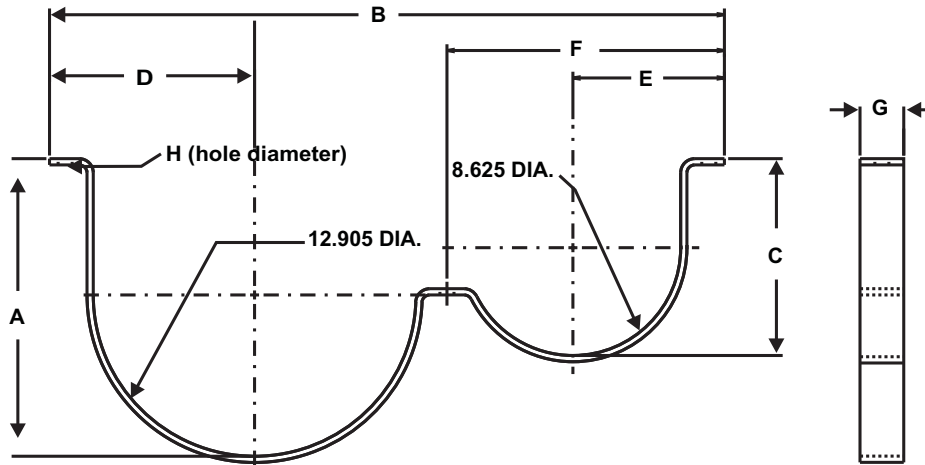


Figure 1. Dimensions for 225-lb. System (P/N 06-236127-001)

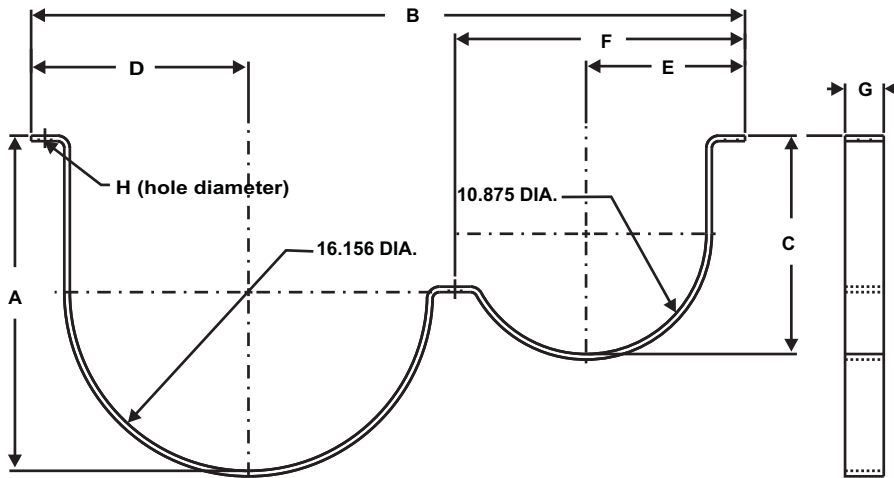


Figure 2. Dimensions for 395-lb. System (P/N 06-236126-001)

**DIMENSIONS**

Part Number	Cylinder Size	A		B		C		D		E		F		G		H	
		in.	mm	in.	mm	in.	mm	in.	mm	in.	mm	in.	mm	in.	mm	in.	mm
06-236127-001	225 lb	11.91	303	27.00	686	7.88	200	8.20	208	6.06	154	11.10	282	1.75	44	0.562	14
06-236126-001	395 lb	14.00	356	32.38	820	8.72	221	9.83	250	7.19	183	13.12	333	1.75	44	0.562	14

FM-200 is a registered trademark of E.I. du Pont de Nemours and Company. Kidde is a registered trademark of Kidde-Fenwal Inc. All other trademarks are the property of their respective owners.

This literature is provided for informational purposes only. KIDDE-FENWAL, INC. assumes no responsibility for the product's suitability for a particular application. The product must be properly applied to work correctly. If you need more information on this product, or if you have a particular problem or question, contact Kidde-Fenwal Inc.

